



GAT MONTHLY MEMBERSHIP PROGRESS REPORT

Results as of: 6/30/2023

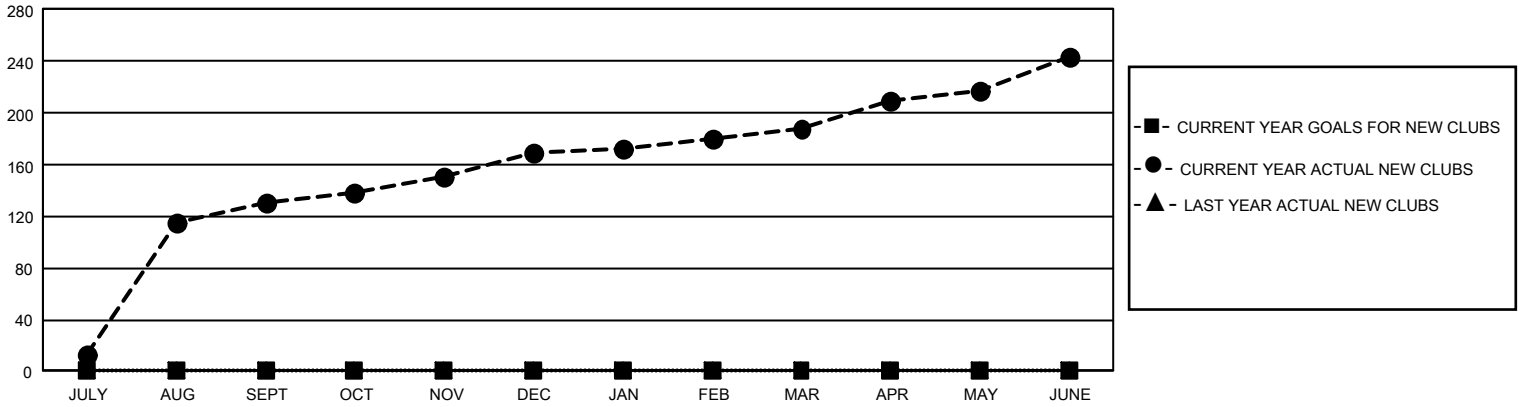
GMT Constitutional Area 6, Group D

REPORT DOES NOT INCLUDE CLUBS IN UNDISTRICTED AREAS.

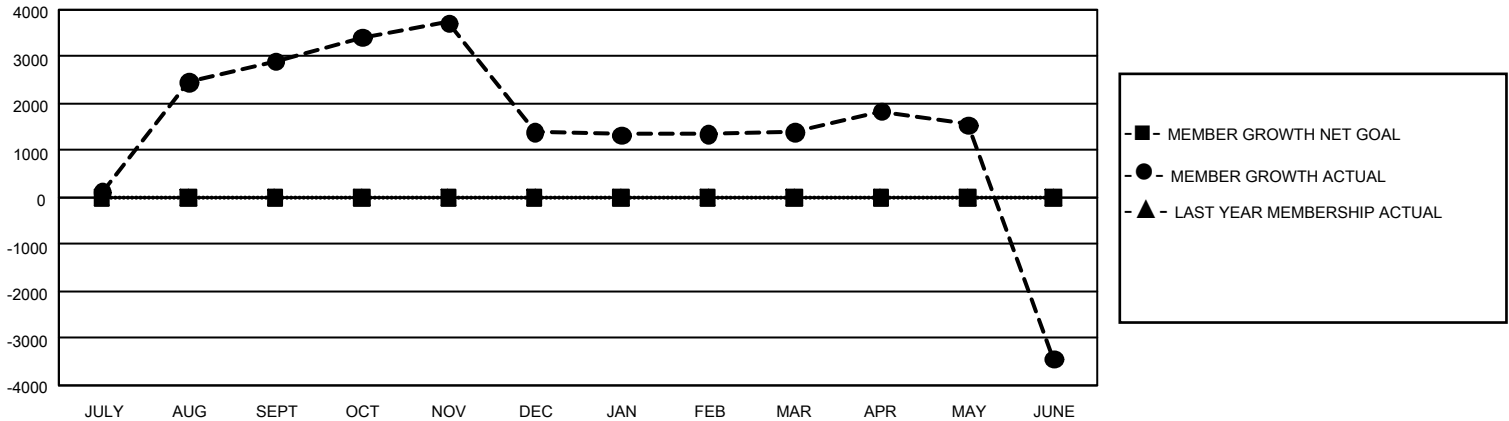
Clubs			
RESULTS FOR 2022-2023			
QUARTER	NEW CLUB GOAL	NEW CLUBS	DROPPED CLUBS
JULY/AUG/SEPT	0	130	32
OCT/NOV/DEC	0	39	154
JAN/FEB/MAR	0	19	32
APR/MAY/JUNE	0	56	157

Members			
RESULTS FOR 2022-2023			
QUARTER	MEMBER GROWTH NET GOAL	MEMBER GROWTH ACTUAL	DROPPED MEMBERS ACTUAL (including transfers)
JULY/AUG/SEPT	0	4,797	1,641
OCT/NOV/DEC	0	1,881	3,347
JAN/FEB/MAR	0	1,459	1,304
APR/MAY/JUNE	0	3,208	7,756

GOALS AND ACTUAL NEW CLUBS CUMULATIVE



GOALS AND ACTUAL MEMBERS CUMULATIVE



DROPPED CLUBS: 375	1,222 CLUBS OF 2,188 ADDED 1 OR MORE NEW MEMBERS	<u>GENDER DISTRIBUTION</u>	
		MALE 27,795 (69.23%) FEMALE 12,321 (30.69%) NON BINARY 1 (0.00%) PREFER NOT TO ANSWER 29 (0.07%)	
<u>DROPPED MEMBERS</u>		CLICK HERE FOR CUMULATIVE MEMBERSHIP DATA	TOTAL FAMILY UNIT MEMBERS 31,665
DECEASED 50 CLUB CANCELLED 4,901 OTHER 9,097 TOTAL 14,048			FAMILY MEMBERS PAYING HALF DUES 22,252